



# Making **Technology** **Work** For Your Security



---

Secure your network against Potential Threats

# Some Advantages and features

## Cost-effectiveness

Lowering total cost of ownership. By consolidating security into a single device, reducing network complexity, and centralizing management functions, Webrom UTM significantly reduce our end-customers' total cost of ownership.



## Webroam's offering

Webroam's fully integrated security technologies offer increased protection, improved performance, reduced costs, and greater reliability.

## Continuous Performance

Continuous Performance. You can get maximum availability of your security infrastructure and minimum disruption to your business.

## Best in Class Technology

It allows effortless, identity-based log management in near real-time. Organizations can match user identity-based information contained in logs with their rights and privileges to reveal discrepancies in user activities.

## Log Management

Best in Class Technology. Experience optimal solution with multi-layer technology protection to suit your budget.

**What are two key descriptors of UTM?** Answer: Modern and powerful best describe Webroam UTM.



The evolution of traditional network security practices and products into comprehensive Unified Threat Management solution brings with it a level of protection never before available to corporate networks.

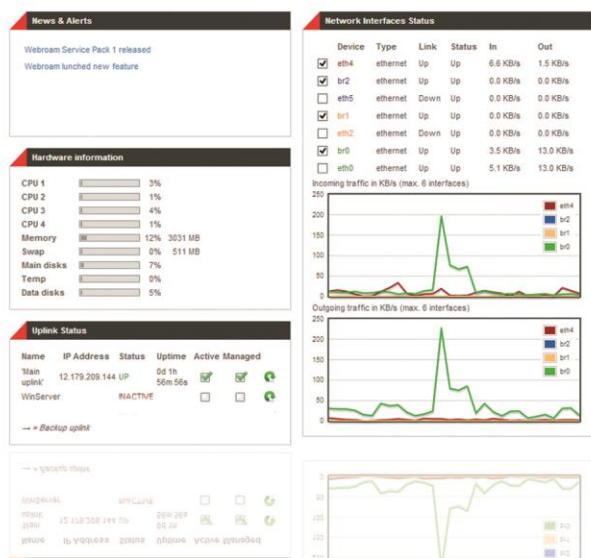
As network threats continue to appear with increasing frequency and complexity,

accelerated UTM applications that utilize a highly reconfigurable architecture and URL-based filtering provide the strongest one-stop protection for any growing network infrastructure.



## Secure your office with Webroam UTM

It helps to keep your office secure against different types of threats.



## ALL IN ONE

Firewall, VPN, Anti-Virus, Anti-Spam, Multi-homing, SSL VPN, Content Filter

WebRoam UTM is a feature-rich unified threat management (UTM) system equipped with multiple security features, helping companies deal effectively with evolving network threats.

WebRoam devices include security mechanisms such as: firewall, IPsec, VPN, SSL VPN, Anti-virus, IPS, URL content filtering, QoS, Bandwidth management, multi-link load balancing, anti-spam, User accounting etc., making it the best network security choice for any company network. With the spectacular growth of the Internet and online access, companies that do business on the Internet face greater security threats.

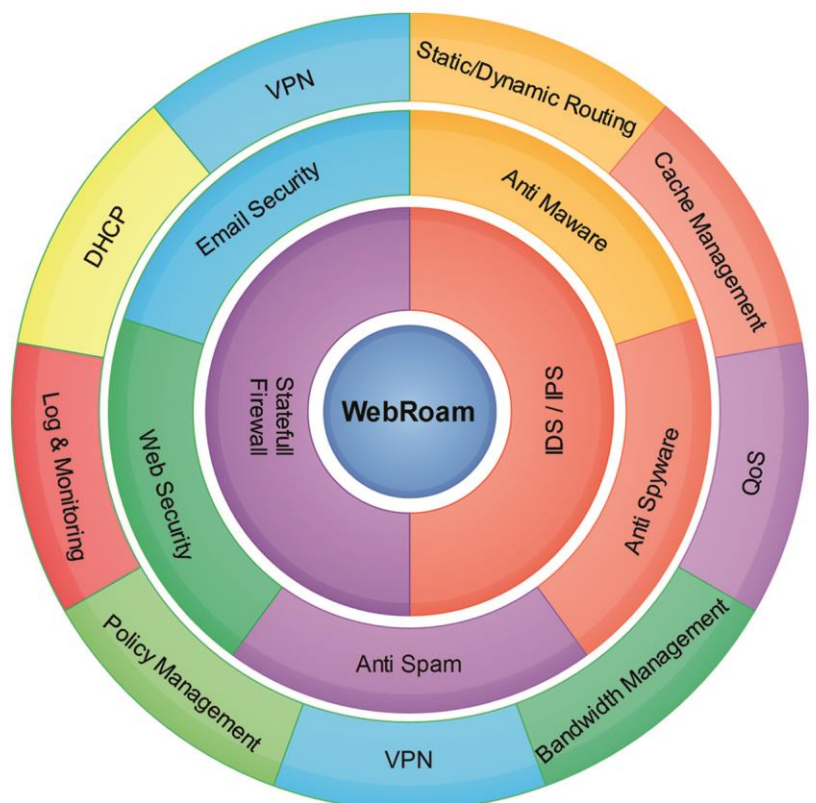


# Effective Technologies For Security of your Enterprise

Webroam UTM provides an organization-wide security picture on a single dashboard through centralized reporting of multiple devices across geographical locations

It is designed to provide a complete security solution in a single product, giving you complete protection and visibility in one place. Rather than monitoring and maintaining an array of systems, we give you a simple alternative — just use this one with multiple features

While IT security threats continue to evolve, organizations are facing shrinking budgets, competing priorities and more complex environments. Liabilities associated with inadequate security management are becoming more severe, ranging from costly downtime to penalties for regulatory noncompliance. Today's enterprise needs its managed security service to deliver a higher level of protection at a significantly lower cost.



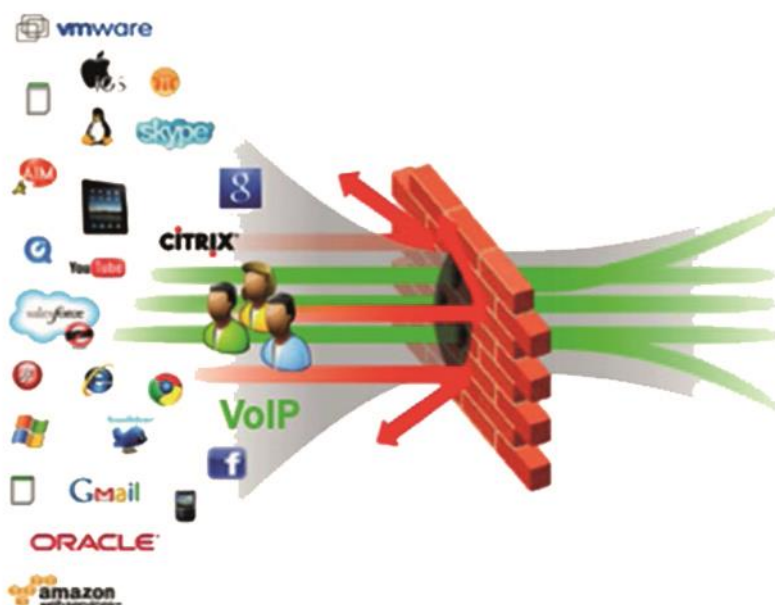


Webroam Unified Threat Management appliances, available as hardware, offer comprehensive security to small, medium and large enterprises through multiple security features integrated over a single.



## Advance Security while being affordable

### Webroam's Target? Wide Range of Customers and Security Solutions



“ Innovative Network security appliances from Webroam have shaped our business. ”

 Webroam provides integrated security solutions for every size, customer from global carriers to small businesses. We protect organizations in every industry, and almost every country around the globe. Our global customers expose our products to a wide range of networking environments and deployment situations, and our products deliver industry-leading protection and performance in the most demanding environments. Unified threat management devices continue to be in high demand and are the predominate security appliance that customers need for their security.

Webroam's appliance-based platforms provide complete network security, policy enforcement, and QoS management solutions for service providers, large enterprises and telecommunications providers. Native support for high-density Gigabit Ethernet (GbE) and 10-GbE interfaces provides tremendous flexibility and throughput scalability. Consolidated security technologies and support for virtual domains are ideal for high-speed security gateways, managed security services, and complex multi-tenant deployments.

## UP-TO-DATE

### SECURITY THREATS WHITIN THE ENTERPRISE

Network security violations can be devastating to businesses. Intellectual property, revenue, customer and company records, and other mission critical resources are at risk. Webroam UTM Firewall is a complete office network-in-a-box Internet security appliance for SMBs. It features wide area networking tools that you would normally only see with enterprise-class devices.

### DEPLOY CONTENT FILTERING FOR EMPLOYEE

Outbound Access Control and report on how your employees use their web access. UTM Firewall appliances enable you to provide URL content filtering, anti-malware, anti-spyware and anti-virus capabilities



### CREATE A SECURE DISTRIBUTED OFFICE ENVIRONMENT

As organizations deploy anti-malware engines, anti-spam solutions, and application layer firewalls at their corporate offices, security staff want their remote users covered by the same type of protection technologies. One of the best ways to accomplish this is to implement a scaled-down, more cost-effective solution at the remote locations, and route all traffic through the corporate office via a secure tunnel.

### SUPPORTING AN IMPROVED SECURITY POSTURE

Webroam's solution combines around-the-clock threat monitoring and advanced policy management capabilities to help improve your security posture. In addition to supporting virtual private networks (VPNs), our service also supports a wide range of additional platforms.



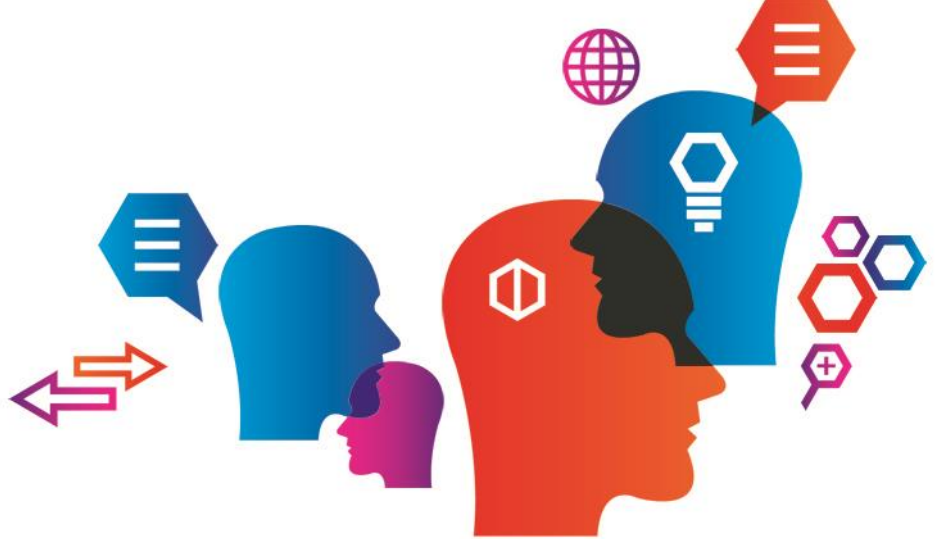
# Unified Technologies

UTM devices provide broad network protection through the combination of multiple security features such as antivirus, intrusion prevention, anti-spam, web filtering, firewall, virtual private network and traffic shaping.

Complementing the technology is team of networking and security specialists, which ensures that the solution is deployed effectively in your organization. With Managed UTM Service, you will have access to the expertise needed for ongoing configuration and monitoring of the UTM device to ensure effective round-the-clock protection for your organization.

It has all-in-one gateway security against all types of infections and intrusion attempts right from the start. Additionally it provides faster response to new malware threats via automatic updates and queries to the cloud.

UTM Service is powered by Webroam's Multi-Threat Security Systems. It provides real-time network-level and content-level



## “ High quality security functionality ”

Our broad set of integrated, high quality security functions enable the most sophisticated and demanding end-customers to avoid the shortcomings of a traditionally fragmented security point product infrastructure.

Based on high quality Intel systems, it provides optimal performance and reliability even for the most demanding environments.



## Some Key Benefits

### Protection

Broad, end-to-end security protection. We offer a broad range of appliances and software to help end-customers defend against today's broad range of security threats, from the endpoint to core.

### Accelerated

Accelerated, high performance unified threat management. We offer a high performance UTM solution based on our proprietary technology platform.

### Update

Automatic updates. The real-time, cloud-based anti-spam engine provides instant detection of new spam in circulation. In addition to engine, both the Web-filtering signature file and the IPS and antivirus rules file are also automatically updated.

# The Thing you need to do today for having security

It's no secret that security threats are on the rise.

Everywhere you look; there are reports on new breaches, hacking/phishing attacks, spam, malware, Trojans, botnet attacks and more. With Webroam UTM you choose the protection you need and a platform that best suits your business.



## DYNAMIC DASHBOARD

Webroam's UTM has a dynamic dashboard that makes observation and monitoring of the latest network activities of the set possible.



## CPU, RAM, HDD USAGE

Real time usage of CPU, RAM and HDD is available in the first page of the management panel.



## NEWS & ALERTS

Latest news and system's and security warnings are shown in news section of dashboard. By clicking on each news link, you can see the news' passage.



## LICENSING

Another Webroam's UTM's feature is flexible and addable license.



## WEB SECURITY

It is one of the security modules of Webroam UTM. By this, administrator can control users' web activities.



## EMAIL SECURITY

Email is one of the ways of spreading the infection in an organization. Webroam oversees all inputs and outputs of email through SMTP and POP3 protocols.



## ANTI-SPAM

Webroam firewall has an engine to detect and prevent spams. Although the anti-spam finds spam perfectly, it is possible to upgrade and define new rules for preventing spam emails.



## LOGS AND REPORT

Some of the key features of Webroam UTM are reporting and event logging. It is possible to print and export the reports of Content Filtering, Firewall, IPS and Visited Site.



## POLICY MANAGEMENT

Webroam UTM lets the organization define and apply different security and management policies. The policies are access level, authentication, content-filtering and anti-virus.



## SECURITY

Gateway security transfers the security to the beginning point of the organization. Different security layers are prepared in Webroam UTM. Some more important are Firewall, IPS, Gateway Antivirus, Content & URL Filtering and Email Security.



## MONITORING

Network administrator can check the system status, running connections, network, system charts, proxy and VPN connection all online.



## VPN (SSL & IPSec)

A VPN is a private network that uses a public network (usually the Internet) to connect remote sites or users together. The VPN uses "virtual" connections routed through the Internet from the business's private network to the remote site or employee.

FLEXIBILITY

NETWORKS

SECURITY

POWER

EASY TO MANAGE





### ROUTING (STATIC, DYNAMIC)

In addition to default routing, it is possible to set dynamic and static policies and improve routing process.



### DHCP

Allows network devices to automatically obtain a valid IP address from the set.



### INTRUSION PREVENTION SYSTEM

They are network security appliances that monitor network and/or system activities for malicious activity. Their main functions are to identify malicious activity, log information about them, attempt to block/stop.



### CACHE MANAGEMENT

It saves data in house and by doing so will improve speed of loading web pages and also it causes the used bandwidth to be reduced.



### STATEFUL INSPECTION FIREWALL

The set is configurable through a web management dashboard. It is possible to define policies and check different parts of system in it.



### QUALITY OF SERVICE (QOS)

It is a method to guarantee a bandwidth relationship between individual applications or protocols.



### NOTIFICATION

If the administrator activates it, the set sends him email to report if there is something wrong. Also, latest information about the set and its status are sent by SMS.



### MULTI-WAN (WITH FAILOVER)

Automatic detection of failed WAN link and routing to working link. It provides continuous service and application availability.



### CENTRALIZED MANAGEMENT

It includes some modules for monitoring and blocking different network traffics. These modules are Port forwarding/NAT, Outgoing /Inter-Zone/VPN traffic & System access. In Addition, defining custom rules for services, ports & protocols are possible.



### QUOTA MANAGEMENT

It is the permission given by administrators that sets limits on the user, groups by time and/or quotas. You can set a daily/monthly/yearly timed access quota by user, or group.



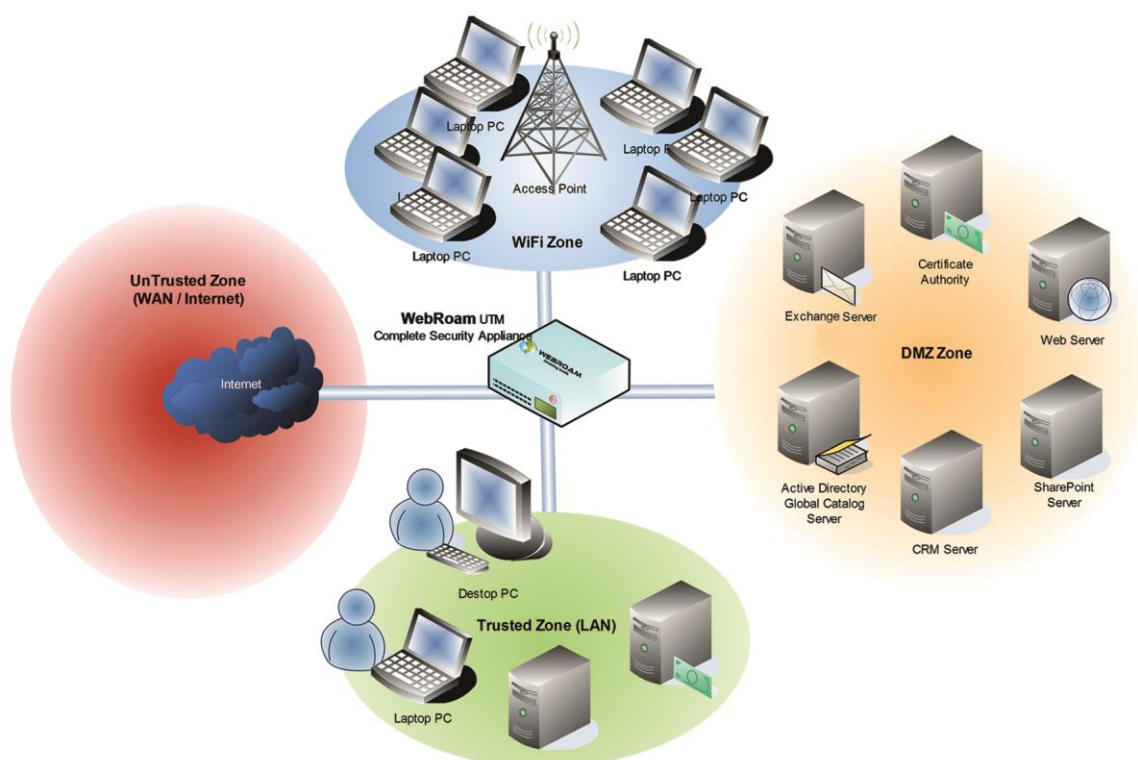
### VLAN

A virtual LAN, commonly known as a VLAN, is a group of hosts with a common set of requirements that communicate as if they were attached to the same broadcast domain, regardless of their physical location.



### GATEWAY ANTIVIRUS

WebRoam UTM Anti-Virus is just one feature in an all-inclusive package that handles the detection and removal of all types of malwares.









Schema 2 - Secure Network by WebRoam UTM.

# WebRoam

## Comparison With Other UTM Industry Leaders



Features	 WEBROAM Amazing inside	 FORTINET	 CISCO	 PANORAMA Unified Network Security
Stateful Packet Firewall				
Network Address Translation				
Intrusion Prevention				
IPSec VPN				
SSL VPN				
OpenVPN Site-to-Site				
OpenVPN Roadwarrior	Universal Client (Windows, Mac, Android, & Linux)			
Clientless SSL (Remote Access Portal)				
Web Security (Content Filtering)				
URL				
Phrases				
File-type				
Antivirus Scanning				
Email Security				
Spam Filtering			Single Spam Engine	
Live Log Viewer				
Dynamic WAN Failover				
DNS Proxy				
SIP Proxy				
FTP Proxy (Antivirus)				
Quota Management				
QoS				
Routing				
DHCP				
Complete & customizable Log, Report, & Charts				
Centralized Monitoring/Management (Updates & Upgrades)				
Flexible licensing				



### WEBROAM BENEFITS

All inclusive pricing (flat hardware cost plus maintenance).

Products target every UTM user segment (SMB, VARs, MSP, Large Corporations, etc.) with all levels of technical skills.

Scales to all organizations and provides centralized management & monitoring (WebRoam Network) for any size network.

Customizable for special customers.

Many market barriers with simple product lines, easy partner access, and intuitive product interface.

FLEXIBILITY

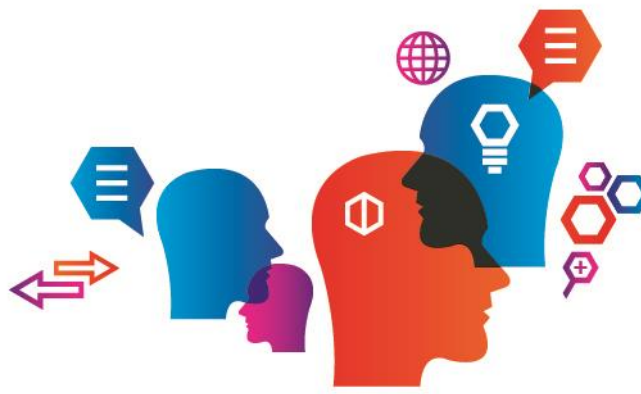
NETWORKS

SECURITY

POWER

EASY TO MANAGE





#### Unified Threat Management

Webroam Unified Threat Management (UTM) Firewalls provide a single multifunction network security appliance that does it all. Whether a company is looking for comprehensive web protection with content filtering or malware detection, or just a network security firewall, UTM Firewall appliances are up to the task. These appliances are designed for small and mid-size businesses, as well as large enterprise branch offices, retail locations, and remote facilities.

Webroam UTMs allow ultra-fast security processing using Gigahertz processors to meet the gigabit Internet speeds in networks today. Combined with parallel security processing by its multi-core processors, the appliances offer high performance.

Webroam UTMs provide broad network protection through the combination of multiple security features such as antivirus, intrusion prevention, anti-spam, web filtering, firewall, virtual private network and traffic shaping.

The highly scalable and flexible solution allows you to upgrade or add services as your business grows

Network-wide control and visibility with  
Webroam UTM.